

House and Land Package*



† Images are for illustrative purposes only.

\$504,650[^]

\$15,000 House Design
& Landscape Rebate*
applies



Since 1986

Further Information:

Bill Chudley

Ph: 0423 745 249

www.wincrest.com.au



Kensington 33 (Contemporary Façade)

Lot 9024 Durban Crescent, Ashton Grove

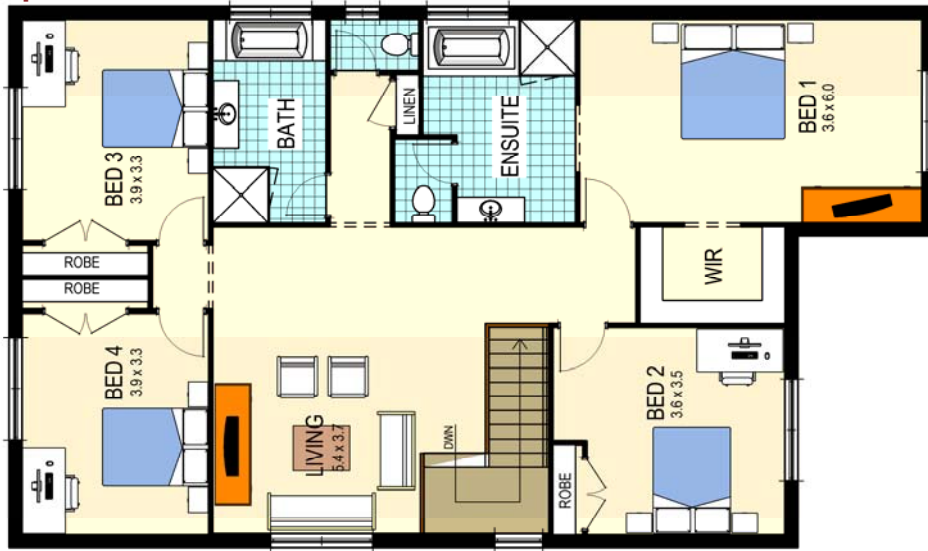
Inclusions:*

- Basix requirements
- Wall and ceiling insulation
- 3,000 litre water tank
- Floor tiles to entry, hallway, kitchen, meals and family
- Carpet to remainder of the home
- Landscaping as per the Ashton Grove House Design and Landscape Guidelines
- Concrete Driveway
- Optional Completion Pack - blinds, TV aerial, light fittings and clothesline for an extra \$3,670

Landcom Sales Office:
Corner Chisholm Road & Worcester Drive,
East Maitland
Phone: 4934 5122 www.landcom.com.au



First Floorplan



Ground Floorplan



House Dimensions:

Ground Floor:	128.50m ²
First Floor:	143.53m ²
Garage:	34.29m ²
Porch (paved)	3.18m ²

Total Area: 309.51m²

* Conditions apply. See Contract for Sale of Land from Landcom. Homes are available for separate purchase from Wincrest Homes. Refer to separate Building Contract. Homes can be purchased from an alternate builder. This flyer has been provided by Wincrest Homes. Landcom is not liable for any incorrect or misleading information or failure to disclose information whether in connection with this flyer or at any other time. †All drawing and images are for illustrative purposes only and should be used as a guide only. ^GST inclusive. Price is based on nominated home on nominated lot. Purchasers to confirm final inclusions with Wincrest Homes. The content of this flyer was produced prior to completion of construction. Wincrest Homes reserves the right to revise the plans and specifications without notice or obligation. Price excludes cost of fencing. Homes subject to compliance with the Ashton Grove Building & Landscape Design Guidelines. Printed May 2010.