



Windara



Display



Metro



Classic



Elite

The **ultimate** in modern living

Designed for living and entertaining, the Windara offers families a balance of space and affordability.



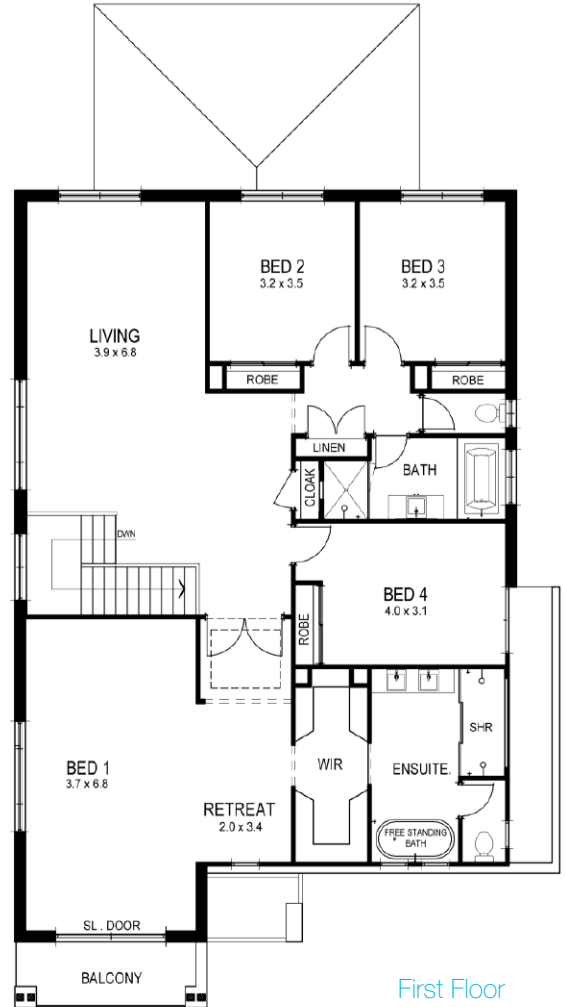
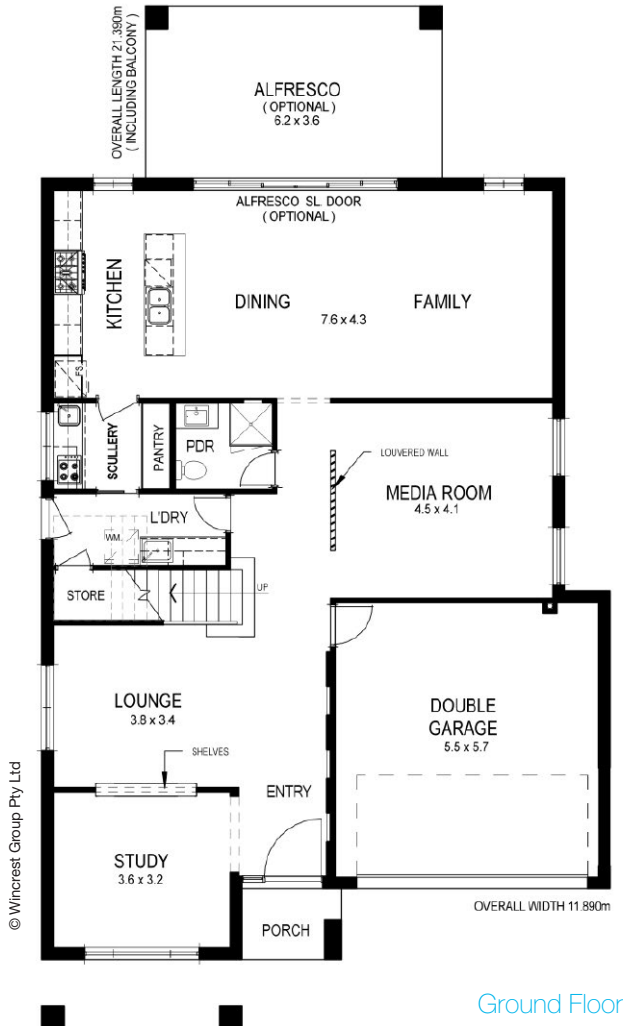
For further details contact our Senior New Home Consultants:

1300 WINCREST (1300 946 273) | enquiries@wincrest.com.au | wincrest.com.au



Windara Display Plan




AS DISPLAYED AT HOMEWORLD 5, 35-39 HARTIGAN AVENUE KELLYVILLE



For living and entertaining.

The award-winning Windara offers everything for those who appreciate the ultimate in modern living. Designed for entertaining, it includes an integrated kitchen, dining and family room – all overlooking a stunning alfresco area.

Overall width 11.89m Overall length 21.39m

First Floor	166.76m ²		4
Ground Floor	140.11m ²		
Garage	34.62m ²		3
Alfresco (optional)	22.32m ²		
Balcony	6.03m ²		
Porch	3.10m ²		2
Total	372.94m²		

All Photographs, illustrations, prices, facades and specifications are intended as a visual aid only. Wincrest Homes reserves the right to revise plans, specifications and prices without notice or obligation. Wincrest takes no responsibility stated or implied for information or clerical errors which could be misunderstood or misleading and accepts no liability for any loss which may be suffered by any person who relies either or wholly or in part upon the information presented. No part of this brochure may be reproduced, stored or transmitted in any form without the written permission of Wincrest Group Pty Ltd. There is no implied or written licence to use these plans unless otherwise agreed in writing by Wincrest Group Pty Ltd. Builders Licence 213442C © Wincrest may decline to quote on certain blocks of land and a surcharge may apply in some geographic areas.