

Display



The Windara Wincrest Homes

Base price with Classic facade, \$258,400
View HomeWorld 5, 37 Hartigan Ave, Kellyville; daily 10am-5pm
Phone 9629 5559
Web wincrest.com.au

DETAILS
Area 372.9sq m
Width 11.8 Depth 21.3
Facades Elite (as displayed), Classic and Metro
Alfresco Optional



The open-plan kitchen and dining with optional alfresco are just some of the entertaining areas in this design.



What the builder says

“ This is a versatile home ideal for families who need space and open living areas at an affordable price. It is an entertainer's delight. The separate butler's kitchen/scullery is great for those who love to cook. The open-plan meals and family room flows through to a stunning alfresco area. The space continues on the upper level with the large resort-style master bedroom and generous ensuite. ”
Jordie Caruana Wincrest Homes' sales and marketing co-ordinator

WE'RE LOVING

- 🏠 The freestanding tubs in the main bedroom ensuite and the family bathroom
- 🏠 The extra storage under the staircase

Perfect home for large family

Entertainment options tick all the right boxes, writes Catherine Nikas-Boulos

There are so many homes on the market that buyers often succumb to exhaustion followed by confusion as one floorplan blurs into another before they come close to making a decision.

But every now and then a home comes along with features that give it a market edge and stay in buyers' minds.

The Windara from Wincrest is one such design that ticks all the right boxes for a large family with a number of entertaining options, including an integrated kitchen, dining and family area.

Where it differs from most other two-storey homes in the display village is that this design has a scullery off the kitchen which is the size of a proper kitchenette.

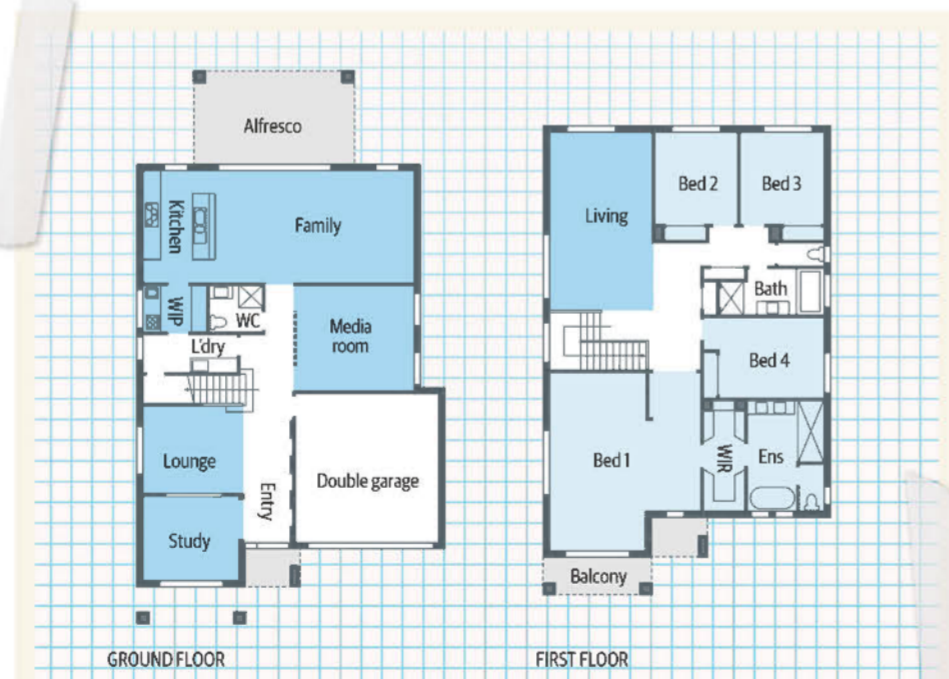
This is the overflow kitchen when the main one is overloaded or simply needs to stay spick and span to keep up appearances. A pantry has been conveniently built into this space, again avoiding mess in the open-plan kitchen.

The Windara is displayed with four bedrooms, but some of the entertaining spaces could well be converted into a bedroom, easily taking it to six or more.

This home was the 2013 MBA Merit award winner for Excellence in Housing Awards and is also available in a six bedroom version with a base price of \$259,830.

Living
This house has not been designed with the quiet, introverted family in mind.

On the ground floor, a lounge sits to the left off the porch, followed by a media room further down the hallway to the right.



An open-plan kitchen leads into the dining and family room, which has an optional alfresco attached. These open spaces are in keeping with the open-plan trend, but they are also gems for entertainment purposes.

Upstairs, another living room, which is almost 4m x 7m in size, is another great space to relax or entertain. A four-person family could essentially retreat to a living area for each person, such is the size of this design.

Bedrooms
Like all memorable two-storey display homes, the main suite is the space that gets people talking. Not only does this bedroom have its own private balcony, it takes up almost half of

level one. A his and hers walk-in robe feeds into the ensuite bathroom where the magic continues in the shape of a freestanding tub and dual sink basins and shower.

The main suite shares level one with the other bedrooms and a secondary bathroom, again with a freestanding tub, between bedrooms three and four. A linen press and cloakroom are also on this level.

Although there are no bedrooms on the ground floor, the study at the front of the home could be turned into a bedroom, as could the media room, while still having the luxury of the lounge and family room.
catherine.nikas@news.com.au
Pictures Bob Barker



The media room is close to the main hub but retains a degree of separation.

