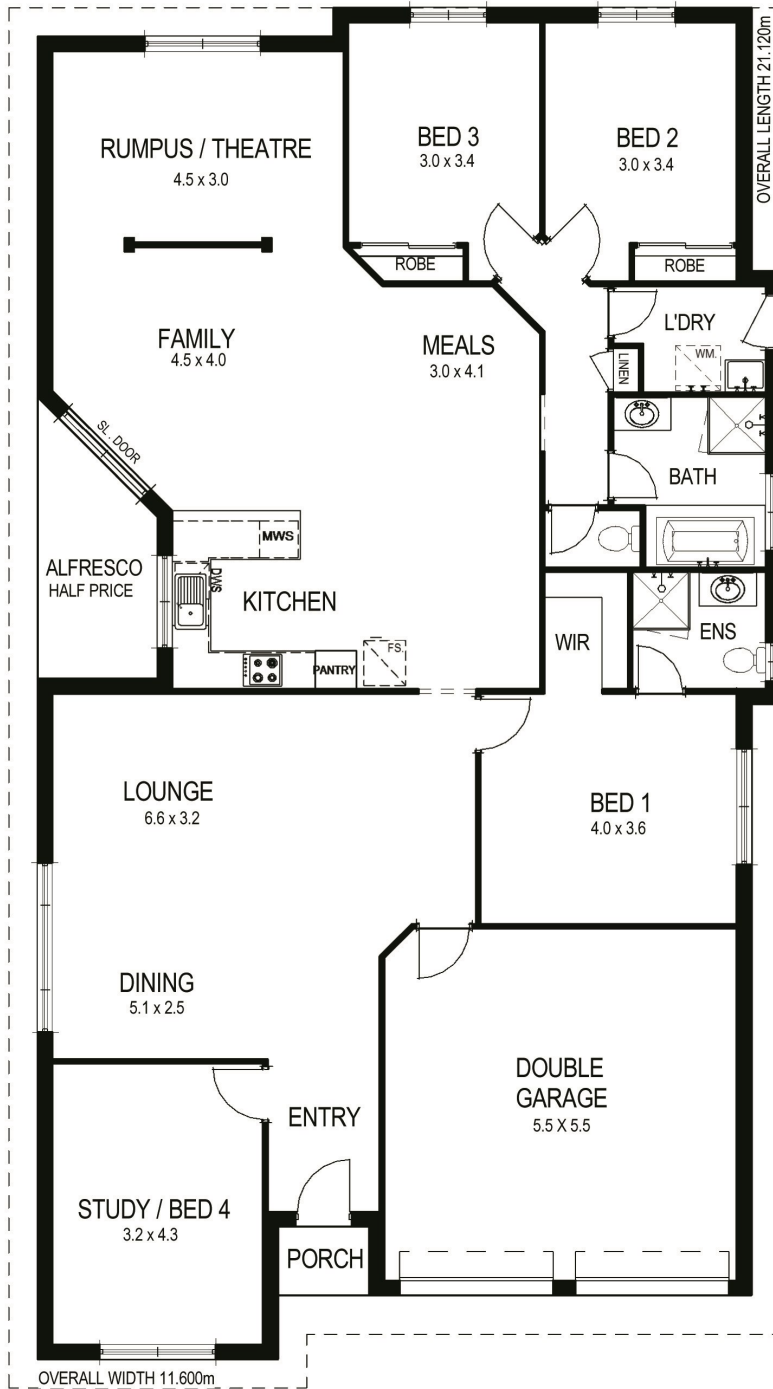




the Beaufort

COMPLETE HOME PACK PLAN



Squares	25
Overall house width	11.60m
Overall house length	21.12m
Living	188.00m ²
Garage	33.03m ²
Alfresco	6.49m ²
Porch	1.53m ²
Total area	229.05m ²

COMPLETE HOME PACK PLAN as priced

Conditions apply. To approved Purchasers only. Cannot be used in conjunction with any other offer. Photographs, illustrations, prices, facades and specifications are intended to be a visual aid only and subject to change without notice. Wincrest takes no responsibility stated or implied information or clerical errors which could be misunderstood or misleading and accepts no liability for any loss which maybe suffered by any person who relies either or wholly or in part upon the information presented. No part of this brochure may be reproduced, stored or transmitted in any form without the written permission of Wincrest Group Pty Ltd © Builders Licence 213442C. 1.4.13