



Trafalgar



Display



Contemporary



Classic



Modern



Vogue

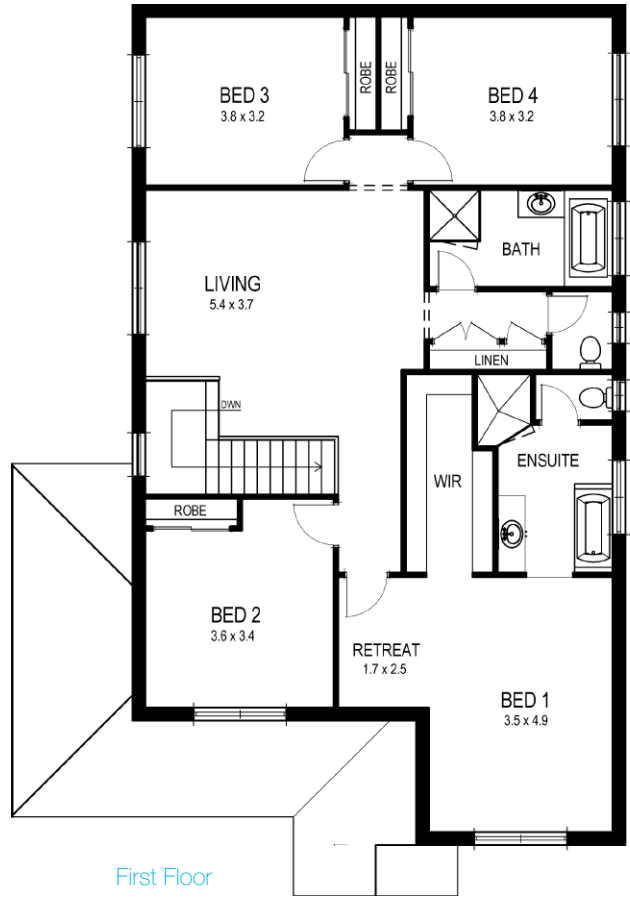
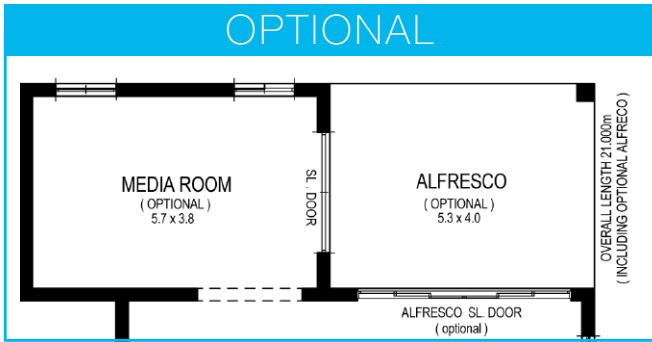
With **all the features**
you'd expect, and more.

A double storey home with extra space for when friends and family visit.



For further details contact our Senior New Home Consultants:

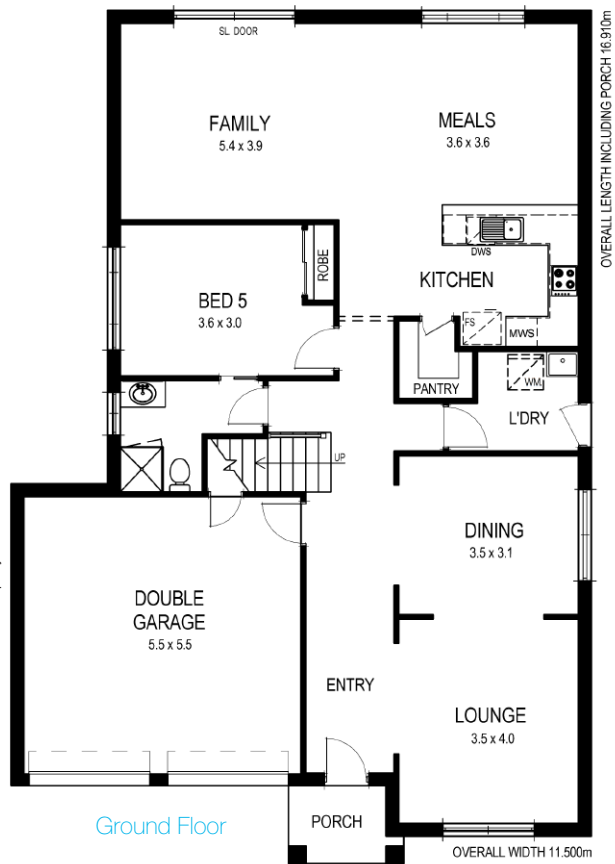
1300 WINCREST (1300 946 273) | enquiries@wincrest.com.au | wincrest.com.au



Standard floor plan as priced.

Overall width 11.55m
Overall length 16.91m including porch

First Floor	143.53m ²
Ground Floor	128.50m ²
Garage	34.29m ²
Alfresco (optional)	21.68m ²
Media Room (optional)	25.84m ²
Porch	3.18m ²
Total	357.02m²



When you need a bit more space.

The spacious, family open plan living makes the Trafalgar the ideal home for growing and extended families. It has all the features you'd expect from a stylish contemporary home.

All Photographs, illustrations, prices, facades and specifications are intended as a visual aid only. Wincrest Homes reserves the right to revise plans, specifications and prices without notice or obligation. Wincrest takes no responsibility stated or implied for information or clerical errors which could be misunderstood or misleading and accepts no liability for any loss which may be suffered by any person who relies either or wholly or in part upon the information presented. No part of this brochure may be reproduced, stored or transmitted in any form without the written permission of Wincrest Group Pty Ltd. There is no implied or written licence to use these plans unless otherwise agreed in writing by Wincrest Group Pty Ltd. Builders Licence 213442 © Wincrest may decline to quote on certain blocks of land and a surcharge may apply in some geographic areas.